



# 2024

ELIZA JENNINGS ANNUAL REPORT



## OUR MISSION

We affirm the dignity and individual worth of older adults and their right to attain the highest possible quality of life. We strive to nurture and sustain their physical, emotional, intellectual, social, and spiritual health. We are committed to having a community in which every member is equally respected, valued, and empowered.



## Letter from the Board Chair

Margaret G. Weitzel

At Eliza Jennings, we are not simply caring for individuals. We are building communities rooted in dignity, purpose, and belonging. As Chair of the Board of Trustees, I have the honor of witnessing this meaningful work across all of our campuses, and I am continually inspired by what I see.

Over the past year, our organization has shown what it means to cultivate connection. From the creative energy of our residents to the dedication of our staff, every individual plays a part in shaping the warm, inclusive environments that define Eliza Jennings. Whether in the lively halls of the Renaissance campus, the vibrant new community at Eliza at Chagrin Falls, or the peaceful outdoor spaces of Devon Oaks, the spirit of community is present in everyday moments. And at our flagship Eliza Jennings Health Campus in Cleveland, the legacy of over a century of service continues to guide and ground our work. That campus is a living testament to the values Eliza Wallace Jennings envisioned when she founded this organization in 1888.

Our Board of Trustees carries this vision forward in our role. As stewards of the organization's mission and long-term success, we are committed to thoughtful governance that supports both present excellence and future opportunity. One of our greatest responsibilities is to guide the strategic direction of Eliza Jennings — not only to meet today's needs but to position us to serve future generations with strength and purpose.

In setting these goals, we are guided by what we see in our communities. We see how investments in infrastructure and innovation translate into better quality of life. We see how dedicated staff and engaged residents bring purpose and vitality to daily living. We see how the experience of community can shape not just how we care for older adults, but how we define excellence in aging services.

Our work as a Board is both practical and visionary. We ensure accountability, financial sustainability, and organizational integrity. But just as importantly, we protect and promote the

One of our greatest responsibilities is to guide the strategic direction of Eliza Jennings — not only to meet today's needs but to position us to serve future generations with strength and purpose.


— Margaret G. Weitzel

values that make Eliza Jennings exceptional: compassion, respect, innovation, and a deep commitment to every person we serve. These are the principles we rely on to shape the future.

As we look ahead, we remain inspired by the enduring legacy of Eliza Wallace Jennings. Her vision continues to resonate today, reminding us that community is not only something we build — it is something we live.

Margaret G. Weitzel  
*Board Chair, Eliza Jennings*

“We protect and promote the values that make Eliza Jennings exceptional: compassion, respect, innovation, and a deep commitment to every person we serve.”



“We are proud to partner with families, healthcare providers, volunteers, and local organizations to enrich the lives of those we serve.”



As I reflect on the past year, I am filled with a deep sense of pride in the community we continue to build together. At Eliza Jennings, community has always been more than a collection of buildings or services. It's the people – our residents, families, team members, and supporters — who bring our mission to life each and every day. This year, we've seen that spirit of connection flourish in powerful and meaningful ways across all of our campuses.

One of the most exciting milestones of the year was completing our first full year at Eliza at Chagrin Falls, our newest community located in Geauga County. What began as a vision of expanding our mission to serve more individuals through skilled rehabilitation, assisted living, and memory care, has now become a vibrant home, shaped by the energy, talents, and passions of those who live and work there.

At the same time, we've made important strides across our organization to ensure our infrastructure is equipped for the community of the future. From essential technology upgrades to improved communication systems, we are investing in tools that support safety, connectivity, and resident well-being. These improvements will help us continue

to meet the needs of older adults in a rapidly changing world while keeping our commitment to personalized, high-quality care at the center.

Our communities remain rich with life, curiosity, and connection. Whether it's a resident leading a discussion group, performing in a theatre production, or touring visitors down our nature paths, these everyday moments of engagement remind us that community is something we all create together. Each of our campuses has a unique character, but they all reflect the same foundational values: dignity, joy, purpose, and belonging.

Of course, none of this would be possible without our exceptional team members. Our staff are the heart of Eliza Jennings. This year, we proudly celebrated several individuals with more than 40 years of service, which is a remarkable achievement that speaks to their commitment, compassion, and belief in our mission. Their legacy is woven into the culture of our organization, and their work continues to make a difference in the lives of our residents every day. Throughout the year, we also continued to invest in education, professional development, and employee well-being. These efforts are essential





Together, we are not only building community,  
we are living it, every single day.

— *Richard M. Boyson Jr.*

## Letter from the President & CEO

Richard M. Boyson Jr.

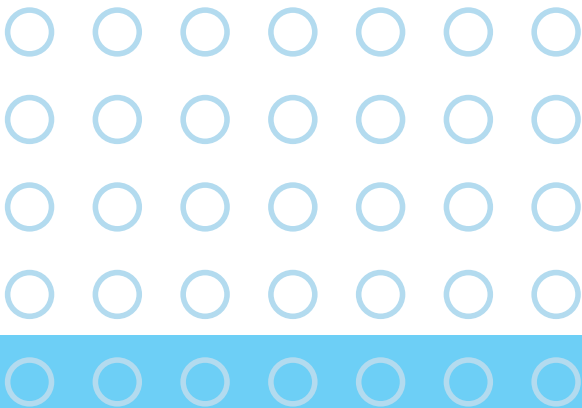
to fostering a workplace culture where team members feel valued and supported in their goals. When our staff thrive, our residents do too.

Our commitment to community also extends beyond our walls. We are proud to partner with families, healthcare providers, volunteers, and local organizations to enrich the lives of those we serve. These connections help us reach more people, share resources, and continue learning together.

As we look ahead, we carry with us the legacy of our namesake and benefactress, Eliza Wallace Jennings, who in 1888 had a bold vision: to create a place of dignity and care for older adults, grounded in compassion and innovation. More than 135 years later, that vision is alive and well. The seeds she planted continue to grow into communities of belonging – places where people are known, valued, and empowered to live fully.

Thank you to everyone who has contributed to our vibrant, evolving community. Your trust and support sustain us and allow us to grow in ways that honor our past and shape a bright future. Together, we are not only building community, we are living it, every single day.

Richard M. Boyson Jr.  
*President & CEO*



# Independent Living Residents

## BUILD COMMUNITY THROUGH ARTS AND NATURE

At The Renaissance, Independent Living residents have created a remarkable sense of community through arts and nature programming. Two resident-driven initiatives—the theater group and the Nature Club—stand out for their impact and success.

The Renaissance theater group has now completed three musical productions: *Guys and Dolls*, *The Music Man*, and *The Wizard of Oz*. The group's journey began in 2023 when Marie Diamond, Independent Living Events and Programs Coordinator, discovered a video on the Music Theatre International (MTI) website in the early hours of the morning and was inspired to bring musicals to The Renaissance.

At that time, MTI did not have an official “Senior Musicals” program, as efforts to launch one had been delayed by COVID-19. When Marie expressed interest, MTI invited The Renaissance to try performing a junior version of a musical and share a recording of the production. This led to *Guys and Dolls* at The Renaissance. Marie sent MTI the recording of the show, along with media coverage, and MTI was impressed, particularly with how the audition process was handled so inclusively.

In 2024, The Renaissance followed up with *The Music Man*, again licensed through MTI. The company was amazed that residents aged 75 to 97 performed such challenging music, using a soundtrack rather than a live accompanist. *The Wizard of Oz* was produced afterward, through a different licensing company.

MTI has now officially launched its “Broadway Seniors” program, offering five shows, including *Guys and Dolls* and *The Music Man*, influenced in part by seeing The Renaissance's productions and learning how they enriched residents' lives.

Of the 204 Independent Living residents at The Renaissance, 172 were involved in these musicals—either performing, working behind the scenes during months of rehearsals, helping at the shows by taking tickets, pushing rollators, handing out programs, or attending as audience members.





Alongside the success of the theater group, the Nature Club, started by residents five years ago, has also flourished. The club now has over 90 members and recently celebrated its fifth anniversary. Among its accomplishments is the development of a nature path, complete with guided tours aboard the "Ren Rover," and other nature-focused activities.

These programs exemplify how The Renaissance's Independent Living residents build community and fulfill the mission of Eliza Jennings through creativity, collaboration, and engagement.





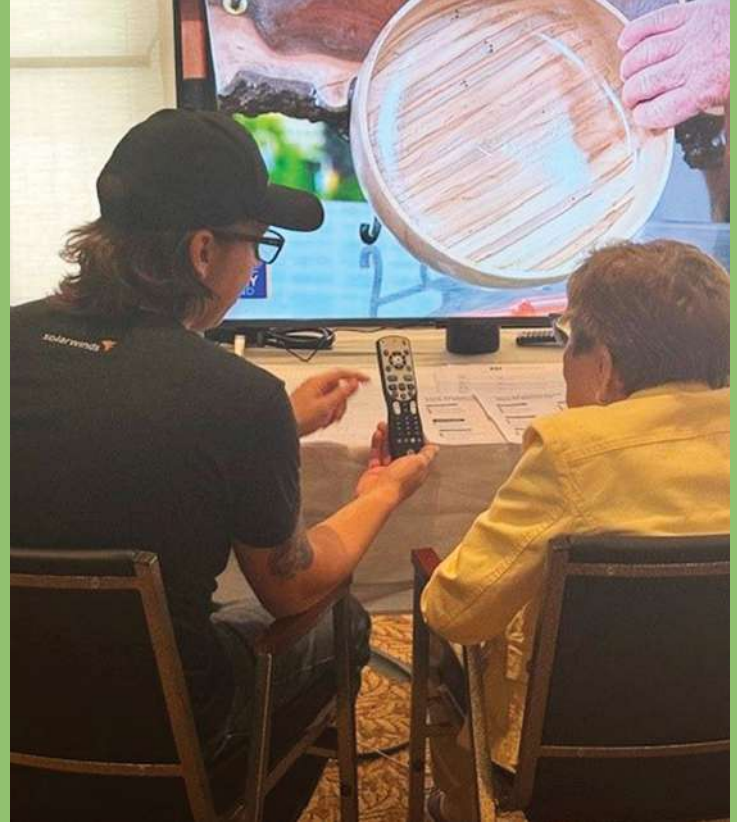
# Tech-Forward with Purpose

## INFRASTRUCTURE AND INNOVATION FOR THE FUTURE

Three red dots

This year, Eliza Jennings continued its commitment to purposeful innovation with major technology upgrades designed to enhance resident experience, safety, and peace of mind. Led by the Eliza Jennings Information Technology Department, these initiatives represent both a leap forward in infrastructure and an investment in meaningful tools that support quality of life.

At The Renaissance, the team completed a campus-wide installation of a new fiberoptic backbone, which is a foundational upgrade that dramatically improves network speed, reliability, and capacity. This enhanced infrastructure not only supports today's digital services but is built to accommodate the expanding needs of tomorrow. As a result, residents now enjoy a comprehensive cable package, high-speed internet, and reliable, cost-effective landline service, all offered at affordable rates. These connected services reflect our promise to deliver modern convenience without sacrificing accessibility or simplicity.



Meanwhile, at Eliza Jennings Health Campus, the community is piloting Nobi Lights, a new generation of AI-powered lighting specifically designed for senior living. Installed in the skilled nursing unit, these smart lamps offer fall detection and prevention, privacy-conscious monitoring, and two-way voice communication, which are all built into a stylish and unobtrusive fixture. This technology not only helps prevent injury, but also promotes independence, safety, and peace of mind for residents and their loved ones.



---

*These connected services reflect our promise to deliver modern convenience without sacrificing accessibility or simplicity.*

---

"These projects continue a tradition of innovation and strategy-based technology initiatives," said Mike Gray, Vice President of Information Technology "We've always been an organization that is tech-forward with purpose—seeking not just to adopt new tools, but to enhance lives through them. The Information Technology Department takes great pride in our close relationships with residents, staff, and families, and in our ability to evolve alongside the technology that's shaping our world."

Eliza Jennings remains focused on smart, resident-centered investments that position us for a future where aging services and technology work hand in hand. Through thoughtful planning, strategic implementation, and a deep understanding of resident needs, we continue to lead with innovation to ensure we meet the needs of our residents today as well as the communities of the future.





# Celebrating Excellence Across Eliza Jennings Senior Care Network

On February 28, the Eliza Jennings community came together to celebrate the people who bring compassion, dedication, and excellence to life every day across our campuses. At the heart of this gathering was the Eliza Excellence Awards, a meaningful new tradition that honors the incredible team members who make our Network such a special place for residents, families, and one another.

This year, we launched a Network-wide recognition program that brings together several important milestones under one unified celebration. The event recognized individuals who were named Employee of the Month throughout the year, those receiving special distinction awards, and all team members who reached significant service anniversaries—a powerful reminder of the longevity and loyalty that fuel our mission.

Among those honored were four extraordinary employees who have dedicated 25 years of service to our residents. Their unwavering commitment represents the best of who we are and what we strive to be. These long-serving team members have touched countless lives with their steady presence and heartfelt care.

In addition to the awards presentation, the event featured a wonderful luncheon, providing a chance for employees to relax, share a meal, and enjoy each other's company. It was a rare and joyful opportunity for staff from different campuses to meet face-to-face, connect with their counterparts, and celebrate each other's achievements in person.

Across every site—whether at the Renaissance, Eliza Jennings Home, Devon Oaks, Acacia Place, or Eliza at Chagrin Falls—staff were celebrated for their dedication and impact. The recognition ceremony was not just a moment to say thank you, but a reflection of our values in action: honoring those who go above and beyond, every day.



# Three Arches Foundation

## STRENGTHENING RESIDENT CARE THROUGH LASTING PARTNERSHIP



Eliza Jennings is proud to continue our partnership with the Three Arches Foundation, whose generous support has had a lasting impact across our network. A previous grant from the Foundation supported specialized memory care and resident wellness programs—enhancing quality of life for those we serve. It also enabled us to invest deeply in our workforce, funding training in critical areas such as trauma-informed care and supporting each of our eligible staff members in becoming Certified Dementia Practitioners (CDPs).

In late 2024, the Foundation awarded a new \$150,000 grant to Eliza Jennings Health Campus to help sustain daily operations. This vital funding supports our skilled nursing, rehabilitation, and memory support services, helping ensure that older

adults in our care continue to receive the high-quality, person-centered services they deserve.

The Three Arches Foundation is dedicated to advancing the health and well-being of the people in our region, with a focus on equitable access to care, behavioral health, and addressing the social determinants of health. Their mission aligns closely with our own commitment to compassionate, individualized care.

We are deeply grateful for their continued investment in our mission and in the lives of the residents and families we serve every day.



# Three Generations and Forty Years of Dedication

## CELEBRATING BRIAN GREGG'S MILESTONE ANNIVERSARY

This year, Brian Gregg marks an extraordinary milestone — 40 years of service with Eliza Jennings. His achievement is remarkable not only for its longevity but also because it represents the heart of a family tradition spanning three generations dedicated to our mission of exceptional care and service.

Brian's journey began in the maintenance department at Eliza Jennings Home, where he followed in the footsteps of his father, who served as Director of Maintenance at that campus. Over the years, Brian's expertise, work ethic, and leadership propelled him to the role of Director of Maintenance himself and eventually he brought his talents to The Renaissance, our largest campus, where he continues to serve with distinction as Director of Maintenance there.

Eliza Jennings has played an important role in Brian's personal life as well. It was at Eliza Jennings Home that he met his wife, Lisa, who has been a dedicated nurse with the organization for more than 30 years. Today, the Gregg family tradition carries on with Michael Gregg, one of their two sons, joining the maintenance team at The Renaissance.

Sandy Skerda, Executive Director of The Renaissance, shared high praise for Brian's contributions: "It is difficult to overstate the significant impact Brian has had at The Renaissance. He has identified and implemented numerous improvements, demonstrating his exceptional ability to drive positive change. Furthermore, Brian is a compassionate leader who commands great respect from his team, peers, and regulatory inspectors."

Brian's 40 years of service are a testament to his commitment, skill, and the deep bonds he and his family have formed within the Eliza Jennings community. We are proud to celebrate this incredible milestone and grateful for the Gregg family's legacy of dedication and excellence. Congratulations, Brian, on 40 outstanding years!





# Honoring Our Longest-Serving Employee

SHIRLEY EDWARDS CELEBRATES 45 YEARS



Alongside celebrating incredible milestones like Brian Gregg's, we are especially proud to honor Shirley Edwards, who this year marks an astounding 45 years of service at the Eliza Jennings Health Campus — making her the longest-serving employee in our network.

Shirley began her career as a State Tested Nursing Assistant, where she dedicated decades to providing compassionate, hands-on care to residents. Her kindness, dedication, and deep knowledge have touched countless lives over the years. Recently,

Shirley embraced a new chapter in her journey with Eliza Jennings, stepping into the role of receptionist. Today, she is the warm, welcoming face who greets residents, families, and visitors each day, continuing to share her kindness and connection with everyone who enters the building.

We are deeply grateful for Shirley's remarkable commitment and the legacy of care and service she embodies. Congratulations, Shirley, on 45 extraordinary years!



**ELIZA JENNINGS SENIOR CARE NETWORK**

Consolidated Statements of Operating Income  
Fiscal Years Ended June 30, 2022 through 2024

<b>Revenues</b>	<b>2024</b>	<b>2023</b>	<b>2022</b>
Resident Services	\$45,018,100	\$34,109,200	\$33,718,000
Earned Entrance Fees	2,141,400	1,936,700	2,148,500
Contributions and Bequests	7,192,000	3,668,800	1,969,700
Non-Resident Services and other income	113,100	303,400	271,200
<b>Total Operating Revenues</b>	<b>\$54,464,600</b>	<b>\$40,018,100</b>	<b>\$38,107,400</b>
<b>Operating Expenses</b>			
Direct Resident Care	\$26,085,800	\$20,913,100	\$19,801,000
General Services and Utilities	5,711,700	4,766,700	4,555,600
Administrative Services	9,652,500	8,765,000	8,895,200
Interest Expense	3,233,500	2,321,700	793,200
Depreciation and Amortization	3,428,300	2,893,700	2,612,900
<b>Total Operating Expenses</b>	<b>\$48,111,800</b>	<b>\$39,660,200</b>	<b>\$36,657,900</b>
<b>Operating Income</b>	<b>\$6,352,800</b>	<b>\$357,900</b>	<b>\$1,449,500</b>
Investment and other income (realized)	3,816,200	670,900	851,300
Paycheck Protection Plan	0	0	3,195,200
<b>Revenues Over Expenses</b>	<b>10,169,000</b>	<b>1,028,800</b>	<b>5,496,000</b>
<b>Capital Improvements and Property Additions</b>	<b>\$21,748,000</b>	<b>\$3,391,000</b>	<b>\$9,863,100</b>

## ELIZA JENNINGS SENIOR CARE NETWORK

### Consolidated Balance Sheets

Fiscal Years Ended June 30, 2021 through 2023

<b>Assets</b>	<b>2024</b>	<b>2023</b>	<b>2022</b>
Current Assets	\$9,974,300	\$6,527,600	\$5,548,100
Property, Net	53,813,400	35,493,700	35,836,300
Other Assets	35,466,900	26,180,300	23,850,900
<b>Total Assets</b>	<b>\$99,254,600</b>	<b>\$68,201,600</b>	<b>\$65,235,300</b>
<b>Liabilities and Net Assets</b>			
Current Liabilities	\$9,822,500	\$7,813,800	\$8,510,300
Long-Term Debt	62,378,500	45,531,000	46,679,400
Other Liabilities	23,759,600	21,747,900	19,718,300
<b>Total Liabilities</b>	<b>\$95,960,600</b>	<b>\$75,092,700</b>	<b>\$74,908,000</b>
<b>Net Assets</b>	<b>\$3,294,000</b>	<b>\$(6,891,100)</b>	<b>\$(9,672,700)</b>
<b>Total Liabilities and Net Assets</b>	<b>\$99,254,600</b>	<b>\$68,201,600</b>	<b>\$65,235,300</b>



**\$25,000 OR MORE**

Walter C. & Lucy I. Astrup Fund  
Douglas & Janet Brews Foundation  
H. S. Judd Trust  
Vida C. Logan Fund  
Maggie A. Reimer Fund  
Estate of Robert Rhodes  
Signe A. Russo Fund  
Three Arches Foundation

**\$10,000 - \$24,999**

Mr. Joseph Allotta  
Estate of Cornelia Babcock  
Mr. Tony Busa  
Ada Emerson Trust  
May Fleharty Trust  
Henryett S. Judd Fund  
Oatey Company

**\$5,000 - \$9,999**

Mrs. Susan Adams  
Mr. & Mrs. John McMillan

**\$1,000 - \$4,999**

Anonymous  
Mrs. Kathy Arterburn  
Mr. & Mrs. Richard Boyson Jr.  
Mr. & Mrs. Robert Dreshfield  
Mr. Richard Fletcher  
Alayne J. Fodor and K.V.  
Gopalakrishna M.D.  
Mr. Richard Fox  
Mrs. Margaret Hartney  
Mr. Glenn Krassen  
Mr. & Mrs. Joseph Messina  
P.L. Mooradian  
Mr. Warren Morris

Mr. & Mrs. James Rogerson  
Mr. Scott Russel  
Ms. Patricia Scanlon  
Mrs. Judith Sklarek  
Mr. & Mrs. John Stoner  
Mr. Allen Tracy  
Ms. Margaret Weitzel  
Mr. & Mrs. Hilton Young

**\$500 - \$999**

Advent Episcopal Church  
The Allotta Family Foundation  
Mrs. Barbara Burney  
Mrs. Polly Burns  
Philo D. Hudson Trust  
Mr. & Mrs. Gerrit Kuechle  
Ms. Rebecca Lilley  
Magnificat High School  
Ms. Judy Malasky  
Mr. Richard Poyer  
Peter & Sheryl Sereda  
Mrs. Peggy Skerda  
Mr. & Mrs. Brad Shrock  
Ms. Judith Vanke  
Mr. David Wilms

**\$300 - \$499**

Anonymous  
Ms. Christine Allred  
Mrs. Marilyn Colnar  
Mrs. Carol Foley  
Mrs. Esther Johns  
Mrs. Eileen Lanning  
Ms. Donna Rippin  
United Way of Lake County Inc.  
Mr. & Mrs. George Wasmer  
Mr. & Mrs. Ralph Zarlino

**\$100 - \$299**

Ms. Judith Anderson  
Ms. Sara Barnett  
Ms. Linda Bonsutto  
Mrs. Audrey Brysacz  
Mrs. Kathy Chapman  
Ms. Patricia Crandall  
Mrs. Elizabeth Doherty  
Ms. Janet Ehlers  
Dr. & Mrs. Ron Fleming  
Ms. Katherine Fort  
Mr. Stephen Gorman  
Mrs. Marilyn Gregg  
Mr. Charles Grossman  
Mr. & Mrs. Thomas Herr  
Rev. John Keller  
Mrs. Renee Kibler  
Ms. Kim Kolens  
Mrs. Donna Koler  
Mr. Joseph Krysh  
Ms. Sandra Krysh  
Ms. Peggy Kuttler  
Mrs. Geraldine Linnevers  
Ms. Rosemary Martin  
Mr. Jack Motz  
Mr. Jarry Persinger  
Ms. Alice Petrulis  
Mr. Scott Rechel  
Mr. Arthur Reilly Jr.  
Mr. Kurt Richmond  
Mrs. Lois Riemer  
Ms. Kathleen Shields  
Ms. Judy Sipich  
Mr. Robert Skerda and  
Mr. Steven Provoznik  
Ms. Janet Slater  
Elizabeth Smetana  
Mrs. Helga Stanger

Mr. Karl Steckman  
Ms. Nancy Stinnett  
Ms. Barbara Szabo  
Ms. Philip Trumbull  
Ms. Marsha VanDusen  
Ms. Karen Virden  
Mr. Rick Weigle  
Mr. Richard Wozniak  
Ms. Roberta Wright  
Mr. Ronald Wysocki  
Ms. Elaine Zedella  
Mr. & Mrs. Brian Zergott

#### **UNDER \$100**

Ms. Jeanne Altieri  
Mrs. Margaret Anderson  
Mr. Richard Arenas  
Mrs. Diane Banning  
Mrs. Margaret Baratko  
Ms. Linda Blaser  
Mrs. Dorothy Boesger  
Mr. & Mrs. David Bowditch  
Ms. Monika Caine  
Mr. & Mrs. Richard Cantor  
Ms. Carolyn Conn  
Mr. Ed Crabtree  
Ms. Jean Driggs  
Ms. Susan Elias  
Ms. Judith Enyeart  
Ms. Debra Fifies  
Ms. Eileen Fischer  
Ms. Mary Eileen Fogarty  
Ms. Carol Foglia  
Mr. Jonathan Freeman  
Mr. Stephen Gladstone  
Mr. Norman Golovan  
Mrs. Barbara Gschwend

Mr. Robert Gura  
Mrs. Barbara Gurney  
Mrs. Janice Henninger  
Mr. & Mrs. Bob Herold  
Hazel Horowitz  
Mr. Earl Jedlicka  
Ms. Victoria Johnson  
Mr. Charles Kacsur  
Ms. Debby Kapur  
Ms. Marcia Karchmer  
Mrs. Barbara Kuban  
Ms. Joan Laing  
Ms. Debra Landrum  
Mr. & Mrs. Richard Marsh  
Mrs. Virginia Marullo  
Ms. Vicki McGaw  
Ms. Marlene Morris  
Ms. Janine Orsenigo  
Ms. Karen Padnos  
Mr. Rick Paulson  
Ms. TerryLynn Pederson  
Ms. Kimberly Polacek  
Mr. Bradley Rechel  
Mrs. Harriett Reehorst  
Ms. Eleanor Rubin  
Ms. Aubri Rush  
Ms. Dorothy Sadowski  
Ms. Maryann Semancik  
Ms. Denise Skrout  
Ms. Cora Sobarnia  
Ms. Kathryn Sovie  
Ms. Linda Srneck  
Mr. John Thomas  
Ms. Katherine Tichacek  
Mr. & Mrs. George Trapp  
Ms. Linda Trares  
Mr. & Mrs. Richard Tucker

Ms. Nancy Vogt  
Mr. Tim Ward  
Ms. Erica Williams  
Ms. Mary Wojno  
Deb & Rick Maxwell  
Ms. Janis Zura

---

*We are grateful to each of the individuals, foundations, and businesses who generously supported Eliza Jennings during this fiscal year. Your support is crucial to ensuring the continued fulfillment of our mission, which states, in part, "...to affirm the dignity and individual worth of older adults and their right to attain the highest possible quality of life."*

---



**MARION GARNETT**

Peter & Sheryl Sereda

**CAROLE GRIVEAS**

Ms. Margaret Weitzel

**SHIRLEY HAGERTY**

Mrs. Janet Ehlers

Ms. TerryLynn Pederson

Ms. Denise Skrout

Ms. Linda Srneck

**GRAHAM HALL**

Mrs. Lois Riemer

**DALE HENNINGER**

Mr. Arthur Reilly Jr.

**SHARON HICKEY**

Mrs. Marilyn Colnar

**CHARLES KELLY**

Mrs. Marilyn Colnar

**CAROL MARTIN**

Mrs. Peggy Skerda

**RAYMOND NOLAND**

Mrs. Rosemary Martin

**ELAINE M. RICHMOND**

Ms. Roberta Wright

**STEPHEN R. RUETSCHI**

Mrs. Carol Cable

Mrs. Donna Koler

Ms. Marlene Morris

Mr. Bradley Rechel

Mr. Scott Rechel

Ms. Cora Sobarnia

Ms. Barbara Szabo

**MARJORIE RUSSEL**

Mr. Scott Russel

**GERTRUDE SELLER**

Ms. Victoria Johnson

**LAURA STEVENS**

Mr. Richard Arenas

Ms. Eileen Fischer

Ms. Valerie Jarm

Mr. Joseph Krysh

Ms. Sandra Krysh

Mrs. Eleanore Lowe

Ms. Kimberly Polacek

Mr. & Mrs. Charles Rippin

Ms. Donna Rippin

Miss Natalie Rippin

Mr. & Mrs. Bartosz Soltys

Mr. Richard Wysocki

Mrs. Julie Zergott

Ms. Janis Zura

**ROSEMARY TORRENCE**

Mrs. Marilyn Colnar

Mrs. Helga Stanger

**HARLAN S. YENNIE**

Mr. Hilton Young

---

**IN-KIND DONORS**

---

J. C. Construction

# 1888 LEGACY CLUB

Walter C. & Lucy I. Astrup Fund	Mrs. Phyllis Hall	Estate of Marianne Mastics
Estate of Cornelia Babcock	Dr. Germaine R. Heil	Colonel Thomas McNeal
Estate of Betty Baldridge	Philo D. Hudson Trust	Estate of Eugenie C. Nyland
Estate of Lucille G. Beyer	Estate of Margaret James	Edwin Northrup II Fund
Estate of Lelia Bolds	Henryett S. Judd Fund	Joseph E. Poe Trust
The Douglas & Janet Brews Foundation	Estate of Helen W. Kemper	Mrs. Clarice "Sis" Randall
Estate of Paul Braun	Estate of Earl Kendle	Maggie A. Reimer Fund
Estate of Helen M. Brown	Estate of Ann S. Ostendarp Klaiber	Estate of Robert Rhodes
Estate of Charles M. & Helen M. Brown Fund	Mrs. LaVeda M. Kovar	Mrs. Thelma Sanders
Mr. & Mrs. William E. Dean Jr.	Vida C. Logan Fund	Mrs. Audrey Smart
Estate of Marjorie Donley	Mrs. Herbert Luzius	Estate of Virginia Stepler
Ada Emerson Trust	Estate of Jack MacFarlane	Mrs. Elizabeth Stumpf
Mrs. James I. FitzGibbon	Mrs. Donald MacKay	Estate of Gertrude Tweed
May D. Fleharty Trust	Estate of Louis Mader	Mr. and Mrs. Richard Weber
Mrs. Kathleen Foley Gibbons	Mrs. Aline G. Masek	Estate of Ethel R. Walsh
Estate of Edward F. Green		Mr. and Mrs. Irwin Williams

## NORTHEAST OHIO HOSPICE

### ROSE MARIE BIANCHI

Mr. Rick Paulson

### ED BILEK

Ms. Monika Caine

### CHARLES CABLE

Mrs. Carol Cable  
Ms. Karen Padnos  
Ms. Marsha VanDusen

### DORIS JANE EMERY

Ms. Nancy Stinnett &  
Mr. Tom Chapman  
Ms. Karen Virden

### JAMES HAMERSTONE

Ms. Katherine Tichacek  
Mr. Tim Ward

### DONNA HAURY

Mr. Jonathan Freeman

### BARBARA ANN LENIHAN

Ms. Janine Orsenigo  
Ms. Eleanor Rubin

### KENNETH NEIGER

Ms. Kim Kolens  
Ms. Elaine Zedella

### MARJORIE RUSSEL

Mr. Scott Russel

### JOSEPH SATORIUS JR.

Mr. Jack Motz

### FRANCES SULLIVAN

Ms. Mary Wojno

### DAVID LOCKWOOD WILLIAMS

Ms. Judith Anderson  
Mr. Norman Golovan  
Ms. Rebecca Lilley  
Deb & Rick Maxwell  
Mr. David Wilms





# Heritage Club

2024 | Eliza Jennings Annual Report

## MAJOR LEADERSHIP \$250,000 AND ABOVE

Anonymous  
Walter C. & Lucy I. Astrup Fund  
Estate of Cornelia Babcock  
Douglas and Janet Brews Foundation  
Eva L & Joseph M. Bruening Foundation  
The City of Cleveland  
The Cleveland Foundation  
Ada Emerson Trust  
May D. Fleharty Trust  
Mr. & Mrs. Graham Hall  
Henryett S. Judd Fund  
Mr. Earl Kendle  
Vida C. Logan Fund  
Maggie A Reimer Fund  
The Reinberger Foundation  
Estate of Robert Rhodes  
Signe A. Russo Fund  
Mrs. Margaret F. Smith  
Estate of Richard and Julia Weber

## LEADERSHIP \$100,000 - \$249,999

A.M. McGregor Home  
Anonymous  
Deaconess Community Foundation  
Mr. John N. Goetz  
Estate of Cora Hatfield  
H.S. Judd Trust  
The Hoffman Group  
Mr. & Mrs. Gerrit C. Kuechle  
Estate of Jack MacFarlane  
The McGregor Foundation  
Mt, Sinai Health Care Foundation  
Oatey Company  
O'Neill Foundation  
The Second Foundation  
Kent H. Smith Charitable Trust  
Mr. & Mrs. William Summers  
Three Arches Foundation

## MAJOR BENEFACTOR \$50,000 - \$99,999

Abington Foundation  
Absolute Pharmacy  
Anonymous  
Charles M. and Helen M. Brown Foundation  
Estate of Helen M. Brown  
Estate of Marjorie Donley  
Eliza Jennings Services Corporation  
Estate of Mr. Michael Fitzgibbon  
Mr. & Mrs. Richard. L Fletcher  
Frederick W. & Janet P. Dorn Foundation  
Mrs. Helen Gratzner  
Mrs. Phyllis Hall  
Ms. Deborah Hiller & Mr. Alan Ross  
Mr. & Mrs. Jack E. Hunger  
Miss Lois Kiawon  
Mrs. Elizabeth Holan Laundry  
Mr. & Mrs. John McMillan  
Medical Mutual of Ohio

*Recognizes accumulated gifts that have reached significant amounts from \$25,000 and above*

Nord Family Foundation

Clarice Bantter Randall

Mrs. Elisabeth Severance Prentiss Foundation

Saint Luke's Foundation

Mrs. Thelma Sanders

The Raymond John Wean Foundation

World Shipping Inc.

**BENEFACTOR**  
**\$25,000 - \$49,999**

Mrs. Susan Adams

Mr. Joseph Allotta

Mr. & Mrs. Richard M. Boyson Jr.

Bricker & Eckler LLP

Mrs. Alice Brookins

Mr. & Mrs. Donald M. Burney

Calfee Halter & Griswold LLP

Mr. & Mrs. Robert Clutterbuck

Mrs. Arline Garvin

Mrs. Margot Gilbert

Mr. Edward F. Green

Mrs. Janet D. Heil

Mr. & Mrs. John E. Hunger

Huntington National Bank

The Richard E. Jacobs Group

Kiczek Builders Inc.

Laurel Lake Retirement Community

Estate of Ruth Luzius

Maloney + Novotny LLC

McDonald Financial Group

Mr. & Mrs. John McMillan

Mr. & Mrs. D. Scott Morrison

John P. Murphy Foundation

Mrs. Phyllis Nacey

Philo D. Hudson Trust

Joseph E. Poe Trust

Mr. Richard Poyer

Mr. & Mrs. Daniel Ramella

Mrs. Constance Rebar

Mr. Donald Rebar

Harold C. Schott Foundation

Mrs. Elizabeth Stumpf

Ms. Cheryl Switalski

Mrs. Elizabeth L. Thomas

Mrs. Sylvia C. Turner

Verizon Wireless

Ms. Margaret G. Weitzel

Ziegler Capital Market Group



---

*Eliza Wallace Jennings dedicated her resources to improve the quality of life of older adults in need of care. You can follow in the footsteps of our benefactress by making a gift to Eliza Jennings – a gift that will both honor her legacy and help to ensure the future of quality aging services.*

---





# About Eliza Jennings

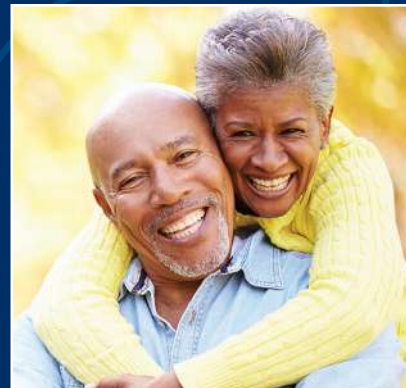
Eliza Jennings, a not-for-profit organization providing excellent care and services to older adults on Cleveland's West Side for 136 years, is a nationally recognized expert committed to helping people make the most of the aging experience.

Eliza Jennings communities include the Eliza Jennings Health Campus in Cleveland; the Renaissance Retirement Campus in Olmsted Township, and Devon Oaks Assisted Living in Westlake.

Eliza Jennings offers a full spectrum of choices for older adults, including independent and assisted living, skilled nursing and rehabilitation services, memory support services, respite

care, and adult day programs. As a member of Northeast Ohio Home Care and Northeast Ohio Hospice, Eliza Jennings offers a full range of home and community-based services, as well as quality and compassionate hospice services for end-of-life care. Home care and hospice services are offered in association with not-for-profit peer organizations that share Eliza Jennings' commitment to excellence in mission-driven, resident-centered care.

*For more information about Eliza Jennings or any of its programs and services, visit [elizajennings.org](http://elizajennings.org) or call **440.540.4700**.*









# Eliza Jennings Communities



**R**enaissance  
RETIREMENT CAMPUS

## **The Renaissance Retirement Campus** *Experience Premier Retirement Living*

To meet the growing need for care and services at all levels of the continuum, Eliza Jennings opened the Renaissance Retirement Campus, one of the first Life Plan Communities in Greater Cleveland, in September 1989. The Renaissance offers premier retirement living on an 80-acre, campus-like setting complete with ponds, beautiful landscapes, and a variety of wildlife and flora. The Renaissance campus has been designated a Certified Wildlife Habitat® by the National Wildlife Federation. As a Life Plan

Community, the Renaissance provides the full continuum of care, from independent living villas and apartments, to assisted living apartments, skilled nursing services, therapy, and home health services should a resident require additional support and care. The Renaissance offers residents peace of mind, knowing they have a home for life and access to additional care right on campus. Amenities include maintenance-free living, onsite social and educational programs and activities, a world-class dining experience, transportation, and a new fitness and aquatic center. An expanded, elegant Bistro dining venue, renovated living room, tap room, and patio offer an enhanced lifestyle and the perfect spot to enjoy socializing with friends and neighbors. The newly constructed 48-unit assisted living residence, which offers memory care and traditional assisted living suites, stands as the latest addition to the campus. This state-of-the-art facility boasts gorgeous decor, blending elegance and comfort. It features modern amenities specifically designed for memory care and assisted living, ensuring a harmonious balance of safety, convenience, and style for its residents.

---

*The Renaissance offers residents peace of mind, knowing they have a home for life and access to additional care right on campus.*

---



**E**liza Jennings  
HEALTH CAMPUS

## **Eliza Jennings Health Campus** *Creating a Legacy*

In 1888, the Young Women's Christian Association of Cleveland (YWCA) erected a home for indigent and terminally ill women with funds from the estate of Eliza Wallace Jennings. In 1922, the Eliza Jennings Home became an independent, incorporated not-for-profit organization. A new building was completed and dedicated in 1925, and was expanded in 1955 with the addition of the Tomlinson Pavilion and in 1966 with the Laub Pavilion. In the 1980s, the home opened its doors to male residents and a portion of the building was dedicated to providing full-time nursing care. A \$6.5 million, 72,000-square foot renovation of Eliza Jennings Home was completed in 2003. Acacia Place Adult Day Center opened on the campus in 2004. Eliza Jennings Health Campus offers skilled nursing and rehabilitation services, long-term care, memory support, and respite care.



# Eliza Jennings Communities *continued...*



**Devon Oaks**  
ASSISTED LIVING

## **Devon Oaks Assisted Living** *Offering 24-Hour Comfort and Peace of Mind*

Devon Oaks Assisted Living in Westlake opened its doors in 2000 and provides a full range of residential services as well as a memory support unit. Devon Oaks offers support and services for older adults who are no longer able to manage living on their own, but do not yet require extensive medical care provided through skilled nursing. Families enjoy peace of mind knowing that parents/spouses have access to 24-hour nursing care and assistance with daily activities in a safe and secure, homelike environment.

## **Eliza at Chagrin Falls** *Expanding the Eliza Mission to Cleveland's East Side*

Eliza at Chagrin Falls joined the Eliza Jennings Senior Care Network in December 2023. Acquired from a respected peer nonprofit, this facility extends comprehensive care services, including skilled nursing, assisted living, and memory care support. Nestled in a picturesque, wooded area in Geauga County, the campus prides itself on offering round-the-clock nursing and support, ensuring that residents at all levels of service receive the utmost care and attention. This commitment to continuous care allows for a tailored approach to each individual's needs, ranging from basic assistance to more intensive memory care and medical support. The combination of a beautiful setting and dedicated care makes Eliza at Chagrin Falls a standout in providing a compassionate, supportive, and safe home for its residents.



**Eliza**  
AT CHAGRIN FALLS

## **Acacia Place Adult Day Center** *Offering Support to Older Adults and their Caregivers*

Acacia Place Adult Day Center opened in 2005 on the Eliza Jennings Health Campus in Cleveland. Acacia Place was designed to meet the needs of physically and cognitively challenged older adults living at home and help them live as independently as possible by providing individualized programming, social and life enrichment opportunities, nutritious meals and snacks, medications, and assistance with bathing and grooming. Transportation is available.



## **Northeast Ohio Homecare** *Caring in the Community*

Eliza Jennings offers quality aging services to meet the needs of older adults who remain in their homes in the community and provides support to help them maintain their independence and quality of life. Northeast Ohio Homecare provides a full spectrum of home health care services, including skilled nursing and therapy and nurse practitioner house call visits.



## **Northeast Ohio Hospice** *Providing Compassionate Support*

Eliza Jennings is committed to offering compassionate care to individuals facing advanced illness and end-of-life care decisions. Northeast Ohio Hospice's holistic and comforting approach supports each patient with a multidisciplinary team dedicated to helping each individual remain as independent and involved as possible. Northeast Ohio Hospice provides personalized emotional and spiritual support, comfort, and compassion for the patient, family members, and caregivers.



**JULY 1, 2023 - JUNE 30, 2024**

**Margaret G. Weitzel**

*Chair*

**Richard M. Boyson Jr.**

*President and Chief Executive Officer*

**Glenn S. Krassen**

*Secretary*

**Allen R. Tracy**

*Treasurer*

**Richard L. Fletcher**

**Alayne J. Fodor**

**Richard L. Fox**

**Margaret C. Hartney**

**James W. Rogerson**

**Patricia M. Scanlon**

**Sheryl L. Sereda**

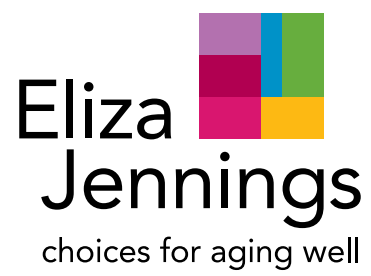
**Terrie Tenk Shrock**

**Allen R. Tracy**

**Rick J. Weigle Jr.**

**Hilton P. Young**





[elizajennings.org](http://elizajennings.org)